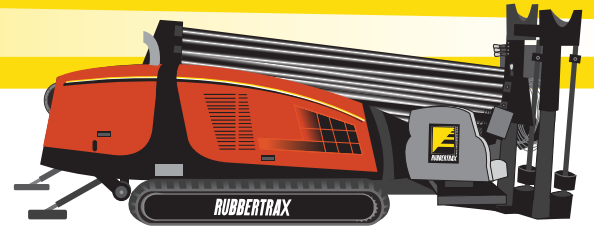
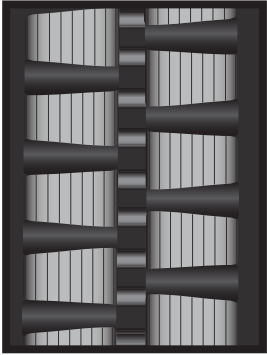


Ditch Witch JT 1420 & JT 1420 MACH 1

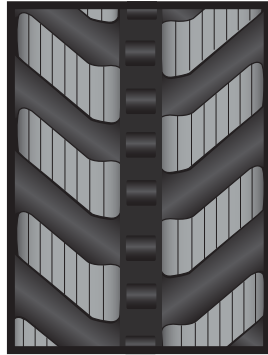
Horizontal Directional Drill



Rubber Track Options



RT_4



RT_23

RT_4 Staggered Block Pad

The staggered block pad design creates a highly versatile track with good balance and traction. The design also minimizes vibration by putting more rubber on the travelling surface which spreads the weight load while increasing flotation.

RT_23 "K Style"

This zigzag pattern provides good traction with less vibration. Resistant to chips and cuts. Use in areas where the surface demands a more aggressive track.

Check with your sales representative for more options.



RT_23



1-866-431-5305 | www.Rubbertrax.com

Experienced Industry Leader | 1-Year Prorated Warranty | Guaranteed Fit | Same Day Shipping

You may not modify, copy, distribute, transmit, display, perform, reproduce, publish, license, create derivative works from, transfer, or sell any information, software, products or services obtained from this pdf.