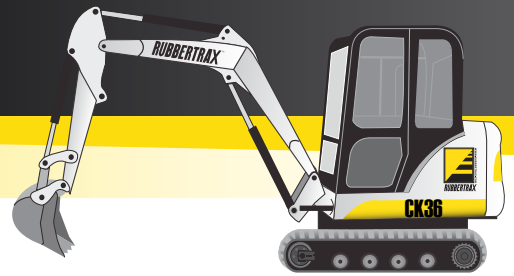
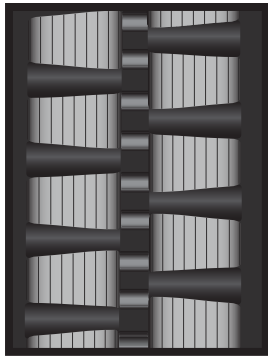


# Case CK 36

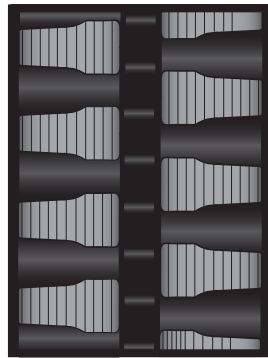
## Excavator



### Rubber Track Options



RT\_4



RT\_14

#### RT\_4 Staggered Block Pad

The staggered block pad design creates a highly versatile track with good balance and traction. The design also minimizes vibration by putting more rubber on the travelling surface which spreads the weight load while increasing flotation.

#### RT\_14

This staggered lug design provides good traction and added performance in mud and dirt applications. Due to having a larger contact pad with the ground, this track has reduced vibration and track noise.

*Check with your sales representative for more options.*



RT\_4



**1-866-431-5305 | [www.Rubbertrax.com](http://www.Rubbertrax.com)**

Experienced Industry Leader | 1-Year Prorated Warranty | Guaranteed Fit | Same Day Shipping

You may not modify, copy, distribute, transmit, display, perform, reproduce, publish, license, create derivative works from, transfer, or sell any information, software, products or services obtained from this pdf.